

FACTORY PREPARED TECHNICAL SERVICE DATA

MODEL: AS121 AIR SUSPENSION SPEAKER

MODEL: AS121



SERVICE PUBLICATIONS DEPARTMENT

Entertainment Products Division • Sylvania Electric Products Inc. • 700 Ellicott Street • Batavia, N.Y.

REMOVAL OF GRILLE ASSEMBLY AND SPEAKERS

IMPORTANT:

Air Suspension speaker systems require a complete seal around all openings. Exercise caution in removal and replacement of speakers to insure air-tight seal. Commercial Mortite is used as a sealing compound.

1. The grille assembly is secured to the speaker housing by wire brads, not visible through grille cloth.
2. Fabricate an angle bracket tool similar to illustration as shown in figure A.
3. Using the tool described in step 2, insert and pry gently at each corner brad on one side of speaker housing.
4. Place fingers under center of grille assembly and pull straight upward to release remaining brads. Remove assembly from speaker housing.
5. Remove hex-head screws from speakers and lift from housing. Disconnect leads from speaker. Install replacement speaker observing correct phasing. Original Mortite can be reused by forming a head around rim.
6. To replace grille assembly:
 - A. Drive original brads into baffle to prevent air leakage
 - B. Drive new brads into baffle through grille.

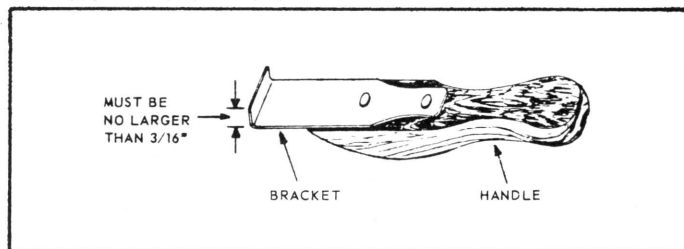
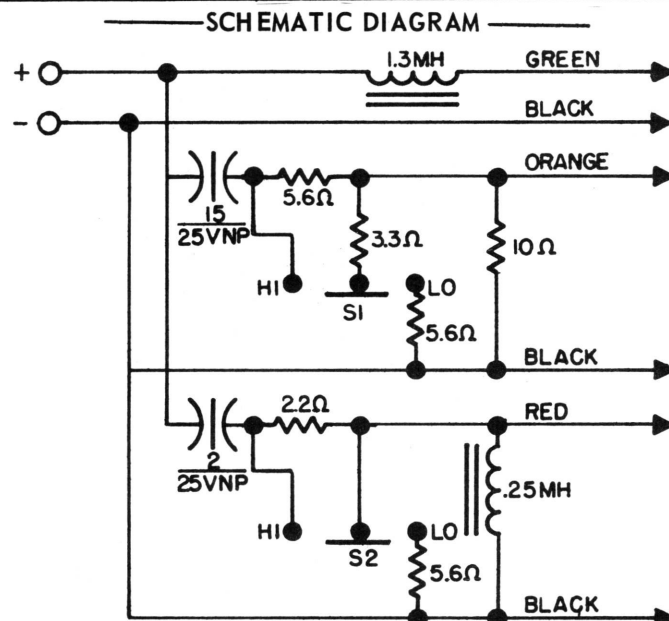
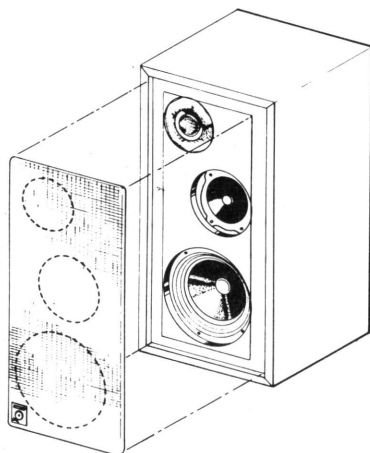


FIGURE A



The AS121 is a small component book-shelf, "air suspension", sealed speaker system incorporating a high compliance 12" bass driver, a 4" high compliance cupped midrange and a wide dispersion super dome tweeter. This system features three position step level switches with a total range of 6db, in 3db increments.

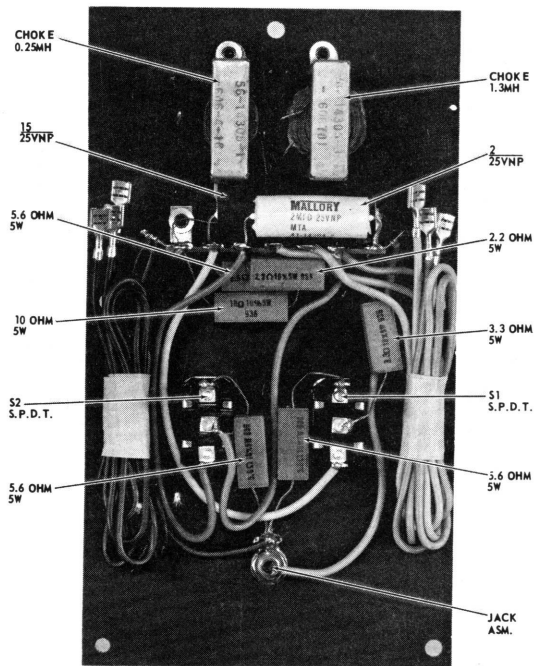
	<u>MIDRANGE</u>	<u>TWEETER</u>
<u>BANDWIDTH</u>	700Hz - 8kHz	8kHz - 20kHz
<u>SWITCH POSITION</u>	<u>LEVEL</u>	<u>LEVEL</u>
NORMAL (CENTER)	0db (Ref.)	0db (Ref.)
INCREASE (TOP)	+3db	+3db
DECREASE (BOTTOM)	-3db	-3db

PERFORMANCE:

Nominal System Impedance	8 ohms
Recommended Amplifier Power	80W - IHF
Minimum Power - small room	10W - IHF
- large room	20W - IHF
Frequency Response, switches in center position	35 - 20kHz ±3db
System Resonance	20 - 25kHz ±6db
Enclosure Volume	55Hz
Crossover Frequencies - Tweeter	3400 cu. in.
- Midrange	8kHz
	700Hz

IMPORTANT: Always use genuine Sylvania replacement parts and tubes.

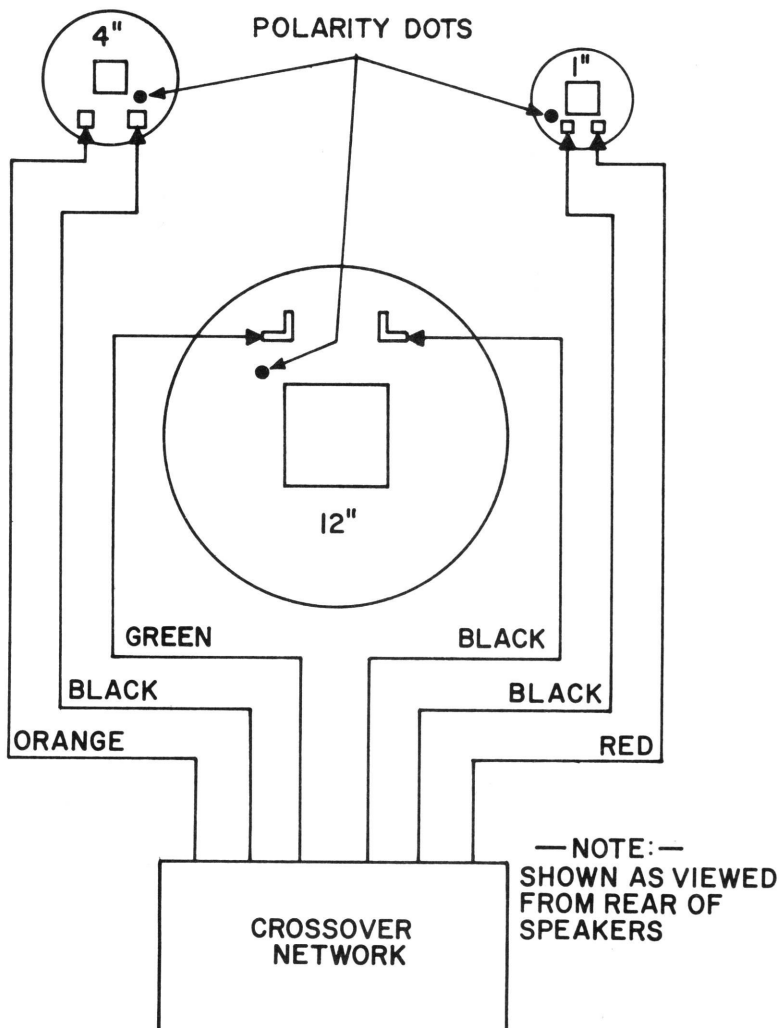
———— CROSSOVER NETWORK ————



REPLACEMENT PARTS LIST

<u>DESCRIPTION</u>	<u>PART NO.</u>
Cabinet - Grille Asm.	10-26198-2
- Nameplate Medallion	74-22924-2
- Trim (Bright Extrusion)	74-26207-2
Cord - Speaker	73-14921-6
Jack - Phono	73-14854-1
- Flat Washer	73-14854-4
- Mounting Eyelet	70-14635-2
- Nut	73-14854-2
- Solder Lug	73-14854-3
Speaker - 1" Dome PM	12-26245-1
- 4" PM	12-22104-2
- 12" PM	12-22113-1
- Crossover - Capacitor, 2/25VNP	41-14304-2
- Capacitor, 15/25VNP	41-14304-5
- Choke, .25MH	56-14305-1
- Choke, 1.3MH	56-14305-3
- Resistor, 2.2 ohm, 5W	36-62454-9
- Resistor, 3.3 ohm, 5W	36-62454-13
- Resistor, 5.6 ohm, 5W	36-62454-19
- Resistor, 10 ohm, 5W	36-62454-25
- Switch, DP3T	33-28152-1

————— SPEAKER COMPLEMENT —————



———— PHONO JACK ASSY. ————

